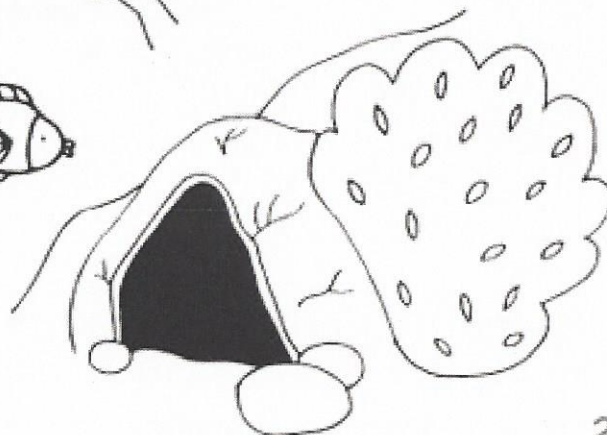
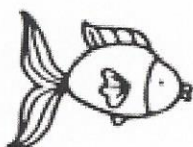
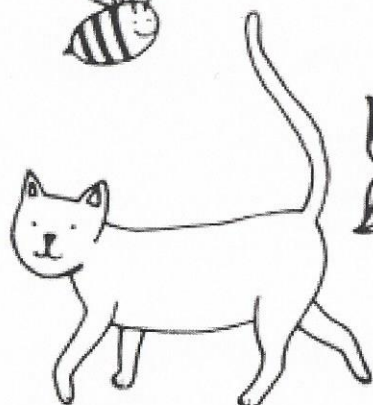
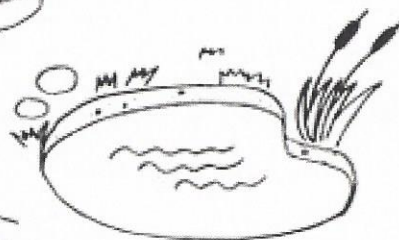
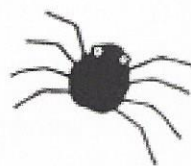
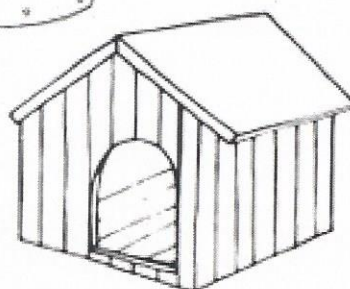
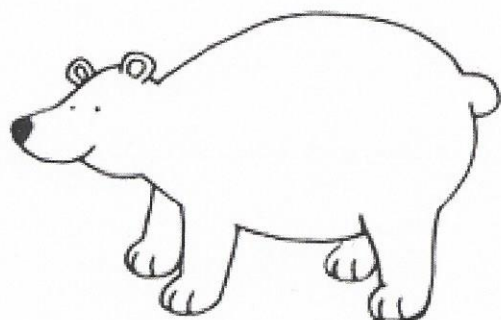
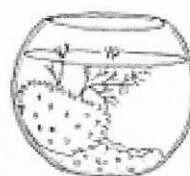
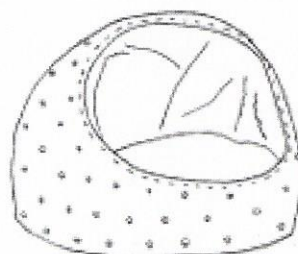
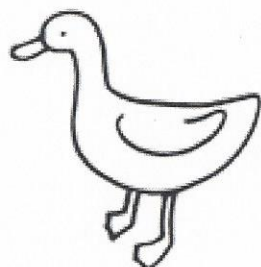
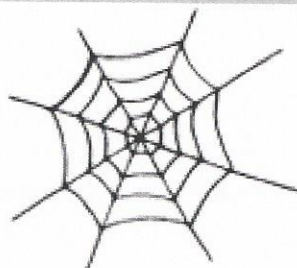
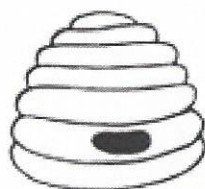
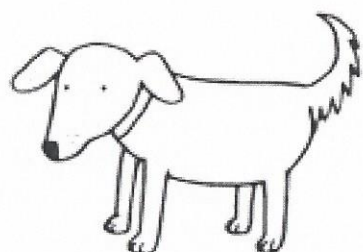


# KDE ZVÍŘATA BYDLÍ



KuliFerdík spí nejraději ve svém pokojíčku. Kde ale bydlí všechna zvířátka? KuliFerdík si není jistý...

Pomoz KuliFerdíkovi najít správný domeček pro každé zvířátko. Dokresli cestičku k tomu správnému obydlí. Ukaž, jak odpočívá pes a jak kočka. Popřej zvířátkům dobrou noc.

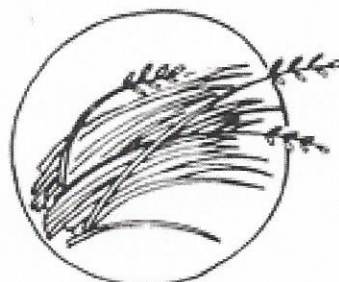
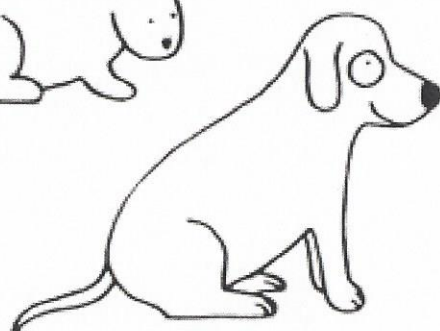
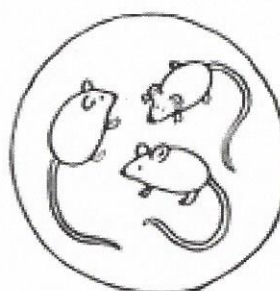
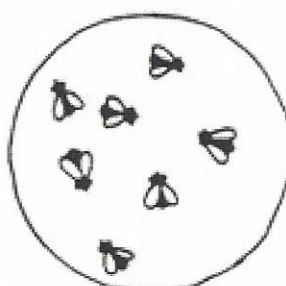
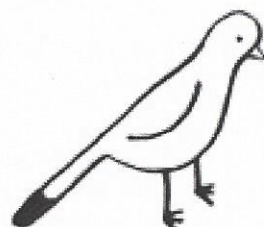
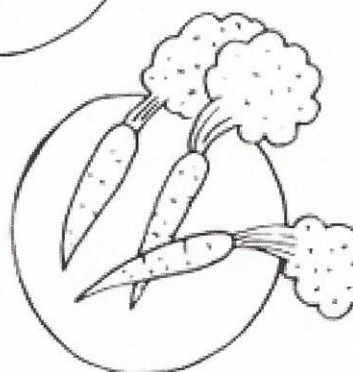
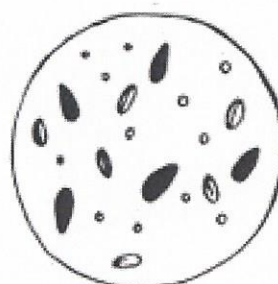
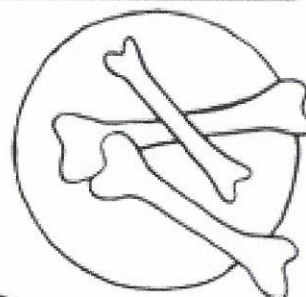
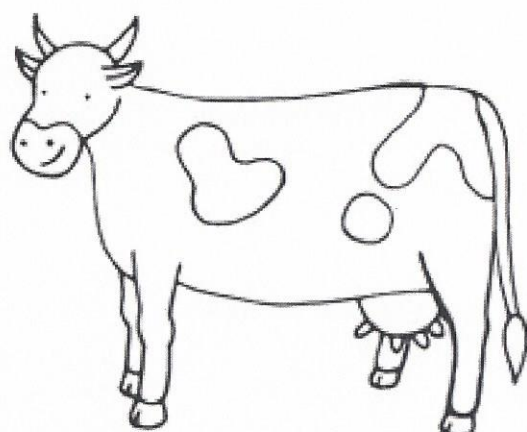


# CO ZVÍŘATA JEDÍ



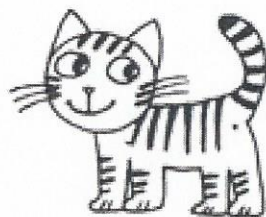
Každému z nás něco chutná  
a něco ne, něco je zdravé, ale po  
nějakém jídle by nás bolelo břicho.  
Zvířata jsou na tom úplně stejně.

KuliFerdík si neví rady, co dát zvířátkům k jídlu. Pomoz  
mu dát každému zvířátku tu správnou misku s potravou  
nebo najdi to, čím se živí.





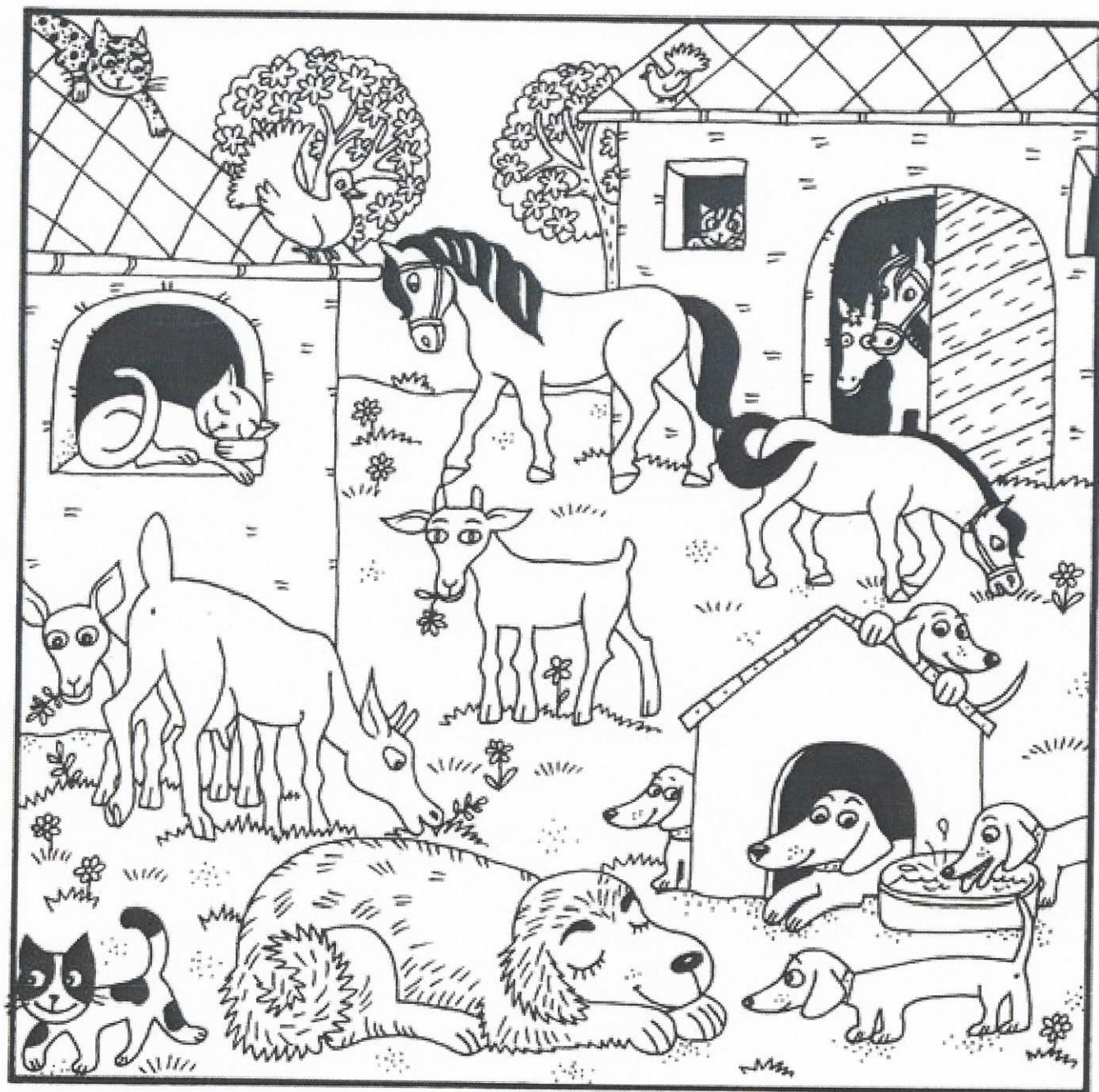
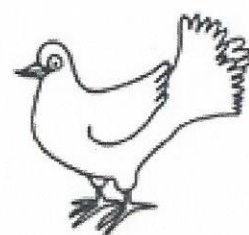
Najdi, kam se  
schovala...



KDO JE TO?

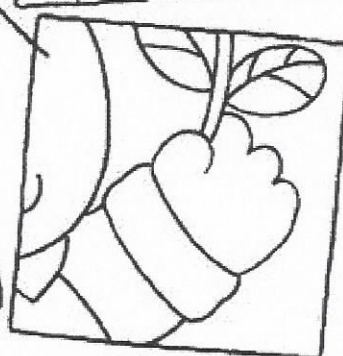
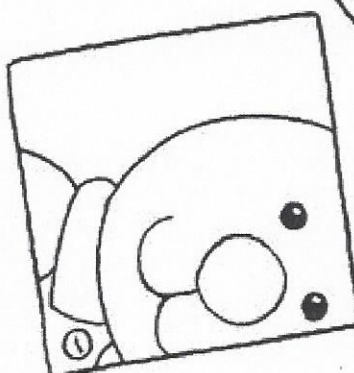
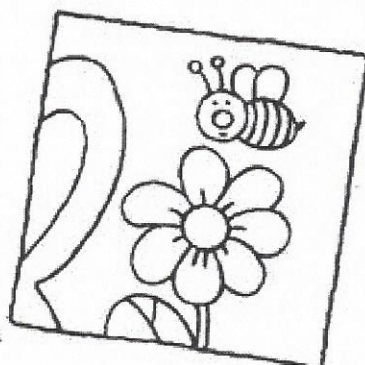
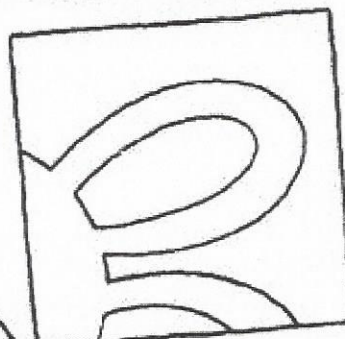
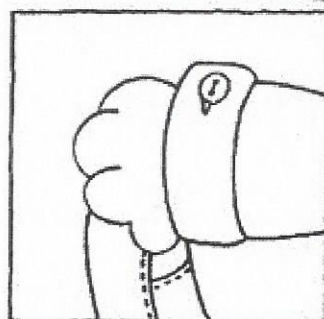
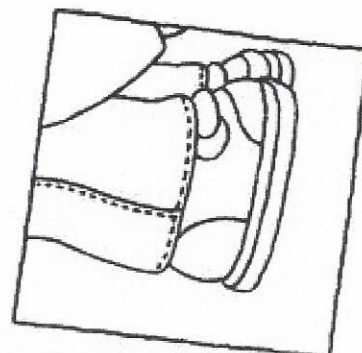
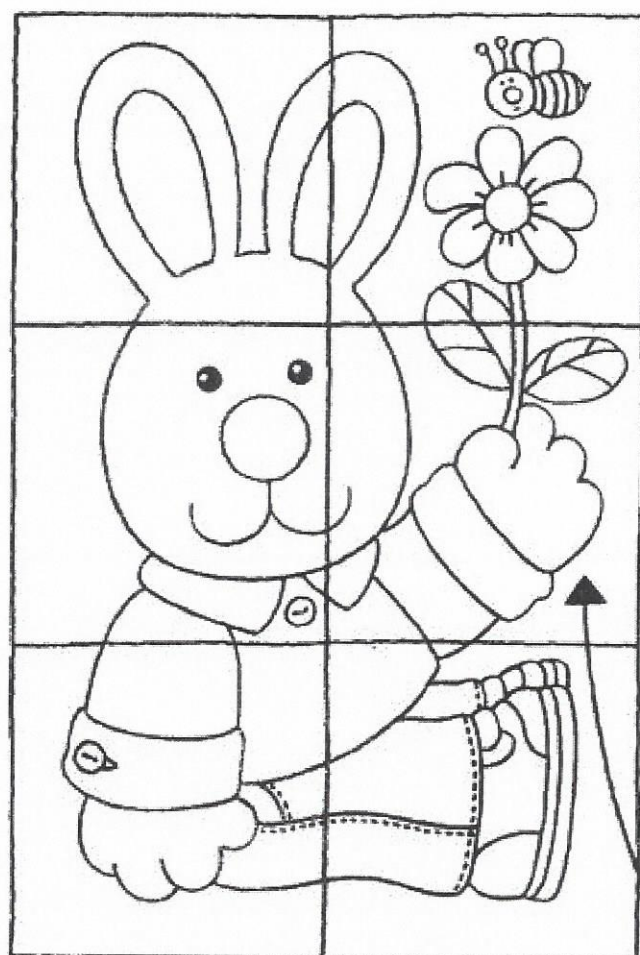
Rybniček i velkou tůň  
rád přeskočí každý \_\_\_\_  
Hlídá dům, louku i les,  
je to náš hlídací \_\_\_\_.

Spočítej...



**A CADA UNO SU CADA CUAL**

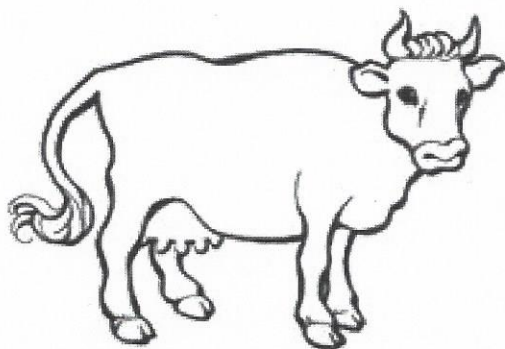
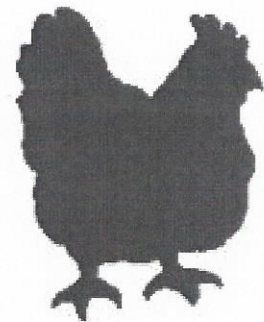
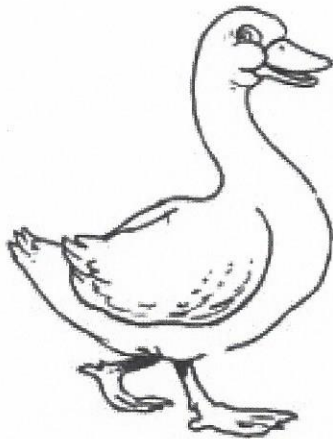
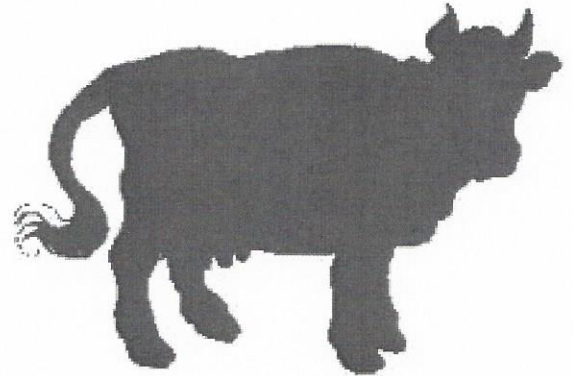
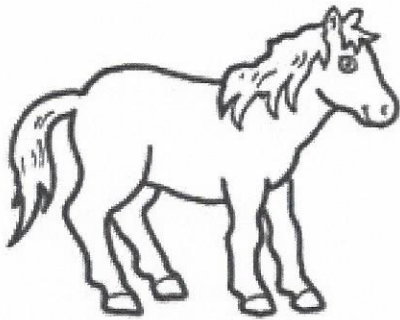
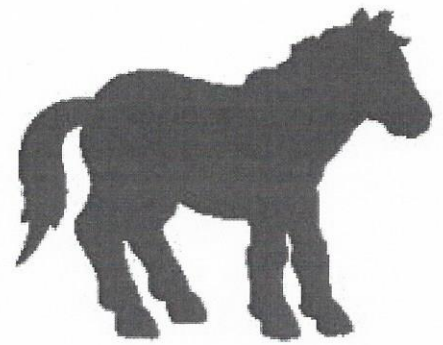
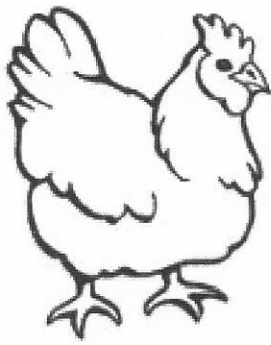
- RELACIONA CADA PARTE CON EL DIBUJO COMPLETO.
- COLOREA: ARRIBA A LA DERECHA · ABAJO A LA DERECHA · EN EL CENTRO A LA IZQUIERDA.



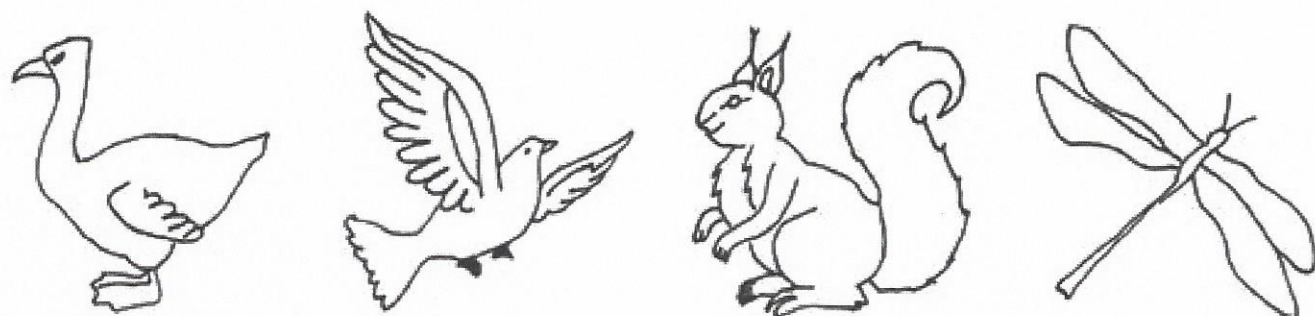
Este material no puede ser reproducido sin previa autorización de KEL EDICIONES S.A.

GRAFIMANIA2

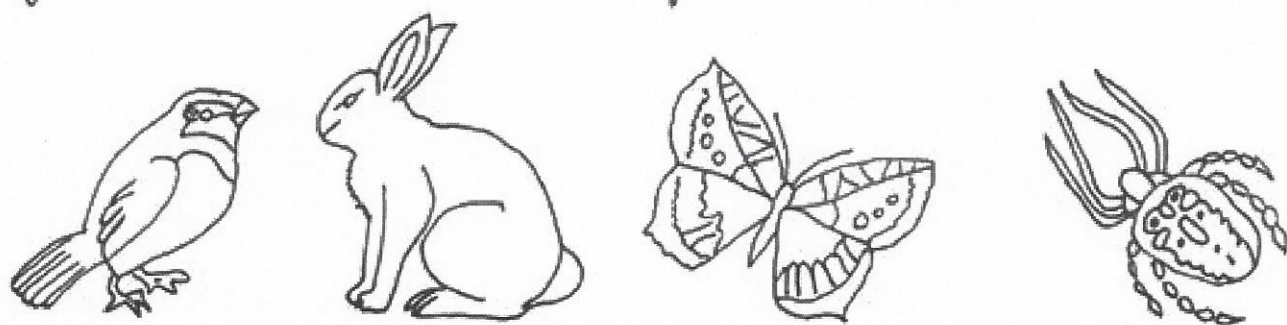




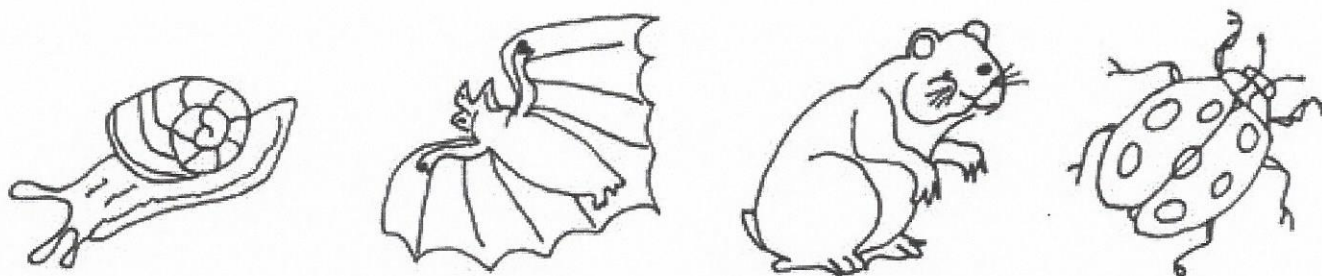
# Pracovní list před - za



Vybarvi zvířátko, které je hned před váčkou.



Vybarvi všechna zvířátka, která jsou za zajíčkem.



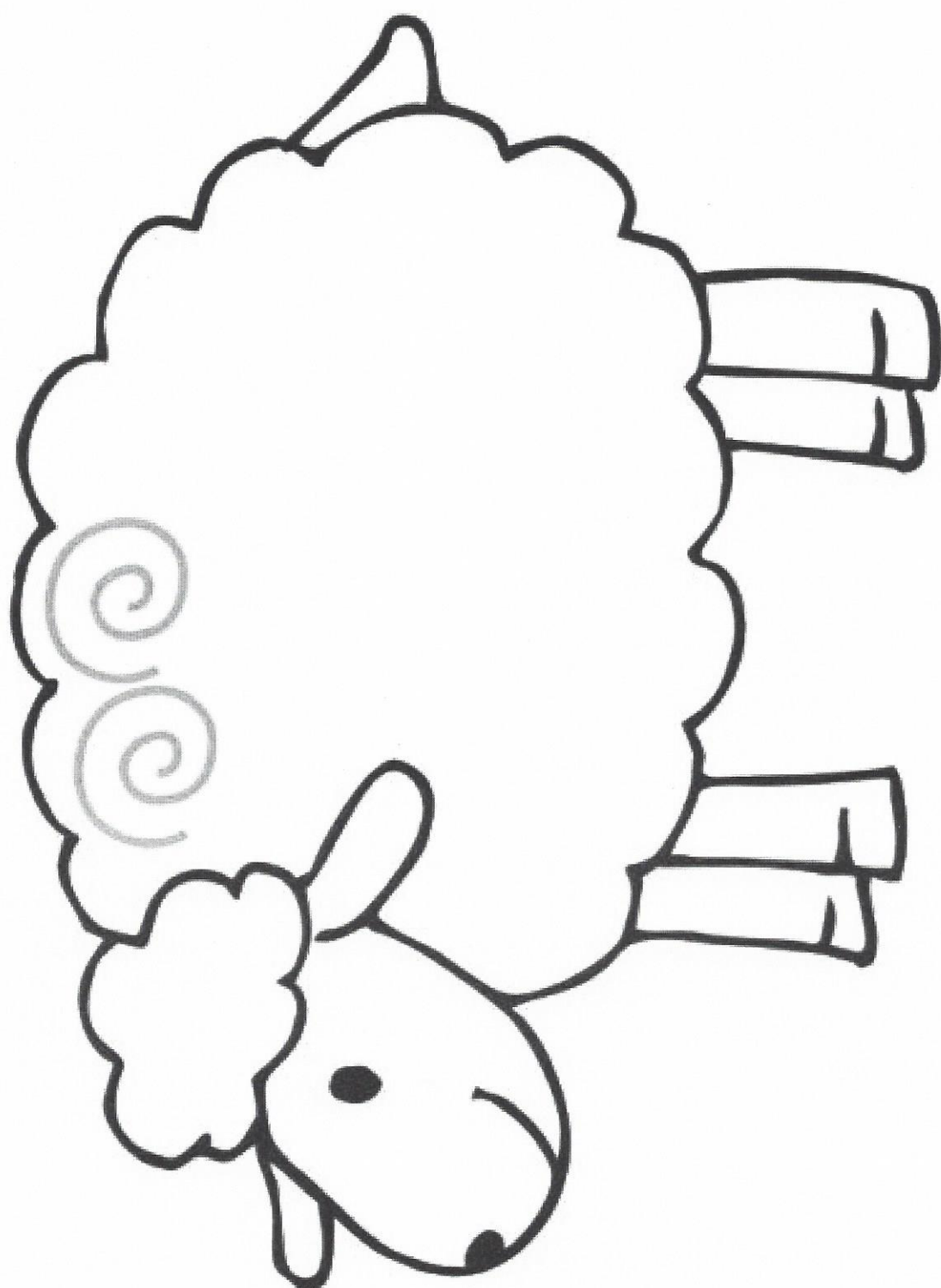
Vybarvi všechna zvířátka, která jsou před beruškou.



Vybarvi zvířátko, které je hned za ovečkou.

Autor: Michael Novotný

Нáпáды про Овiчка

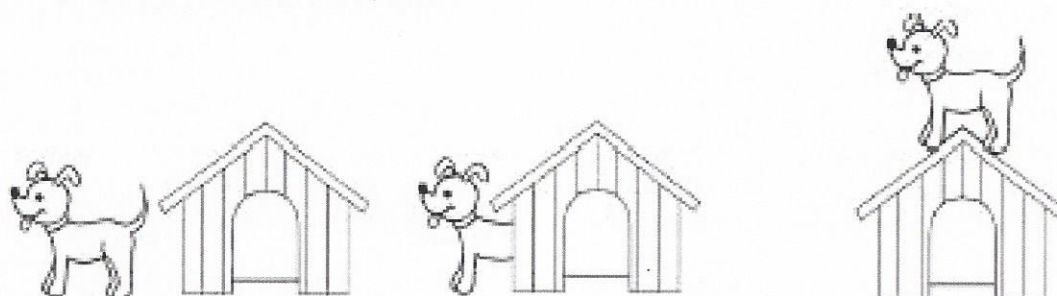


DOMALUD BERANOVY KUDRLINAKY.



## ROZHODNI

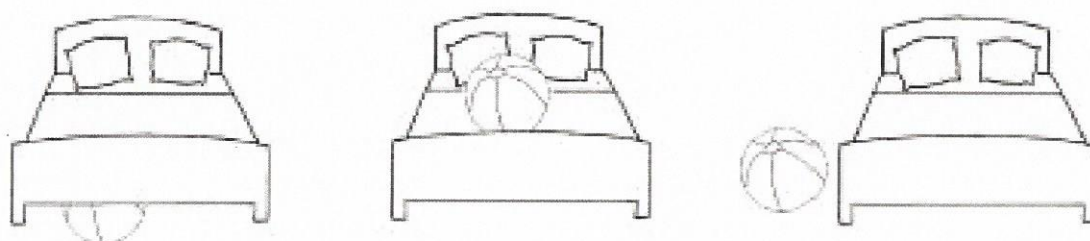
Rozhodni, který obrázek se nejlépe hodí k větě: Pes stojí za bou-  
dou. Tento obrázek vybarvi.



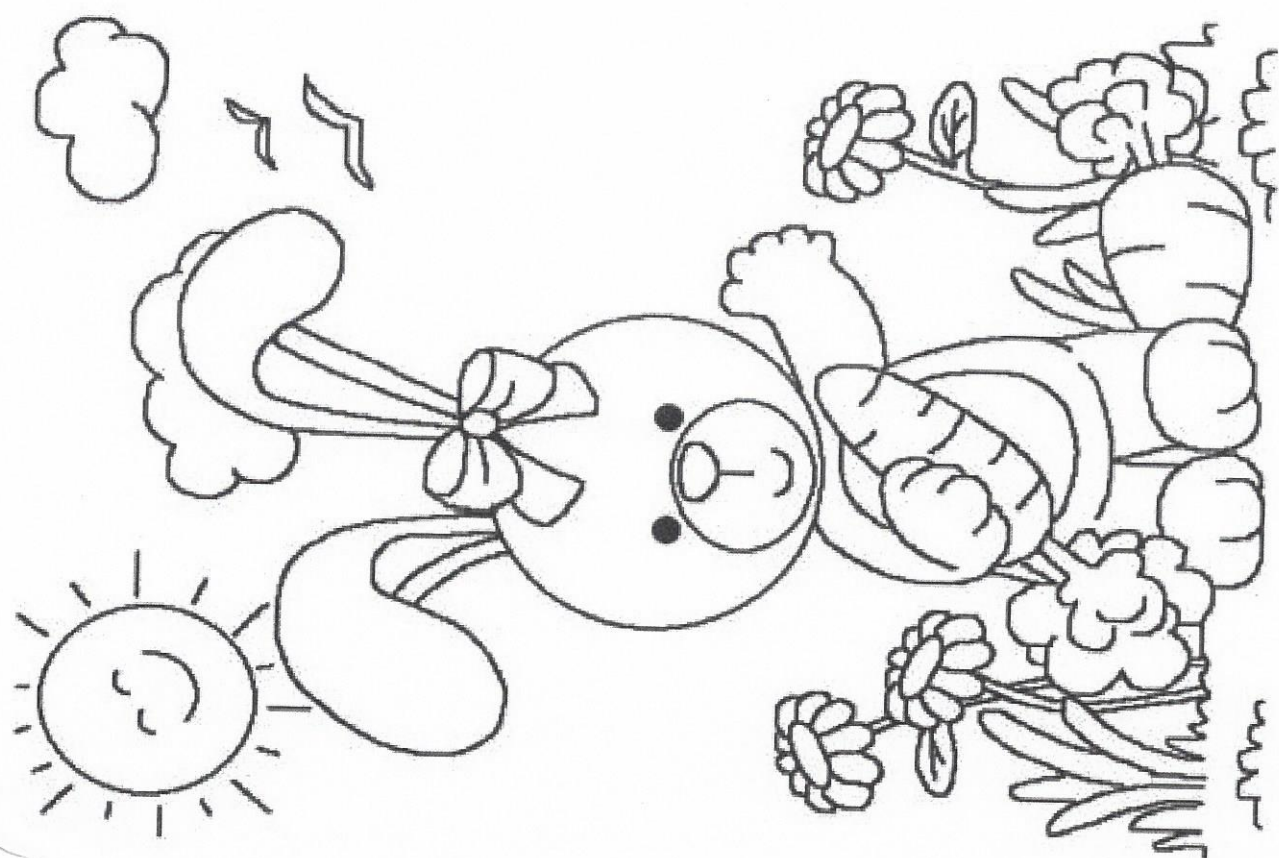
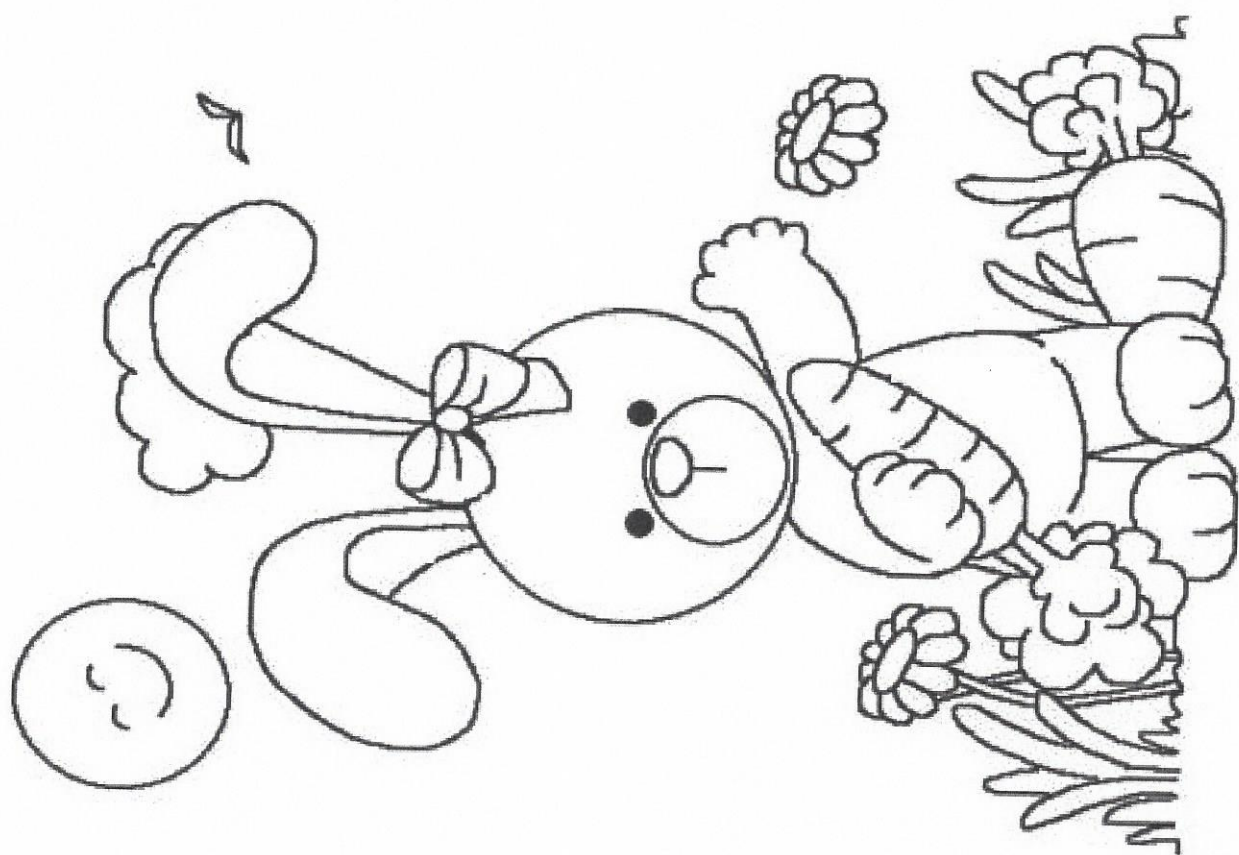
Rozhodni, který obrázek se nejlépe hodí k větě: Kočka leží vedle  
křesla. Tento obrázek vybarvi.



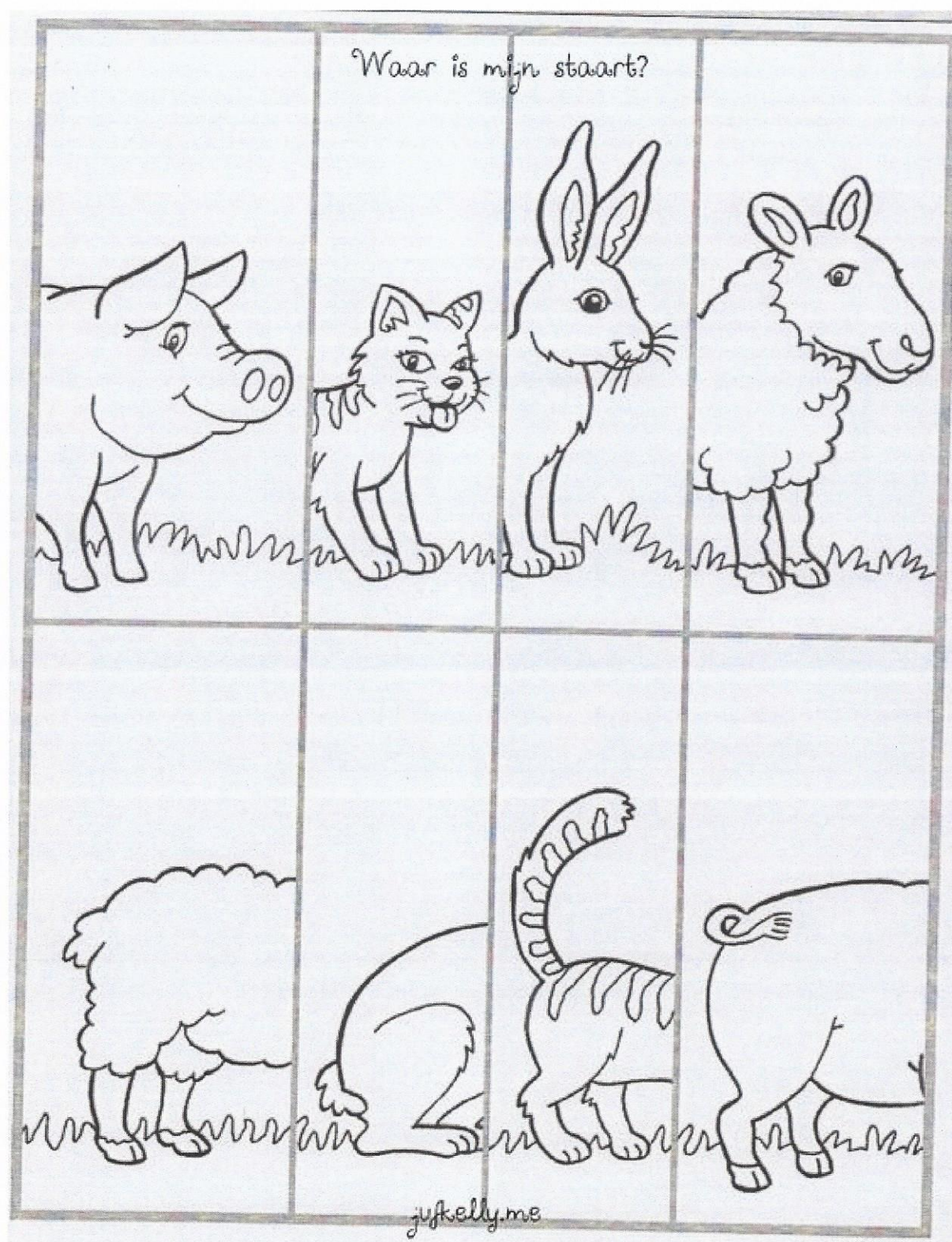
Rozhodni, který obrázek se nejlépe hodí k větě: Míč je pod poste-  
lí. Tento obrázek vybarvi.





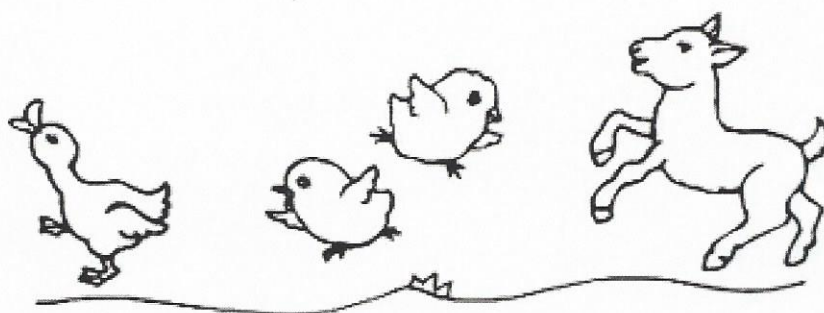
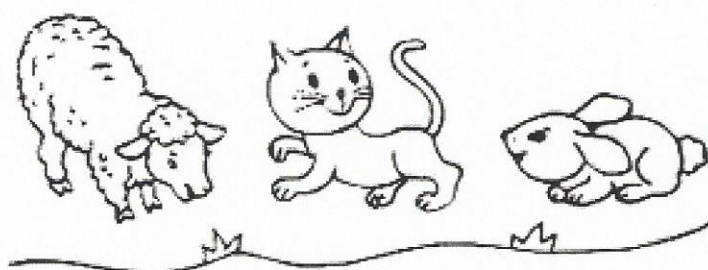
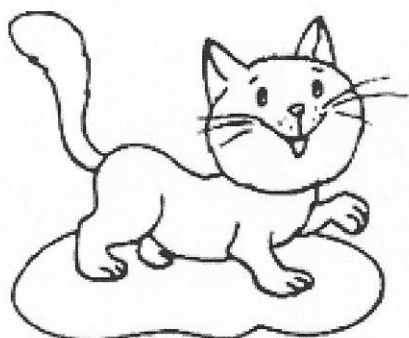
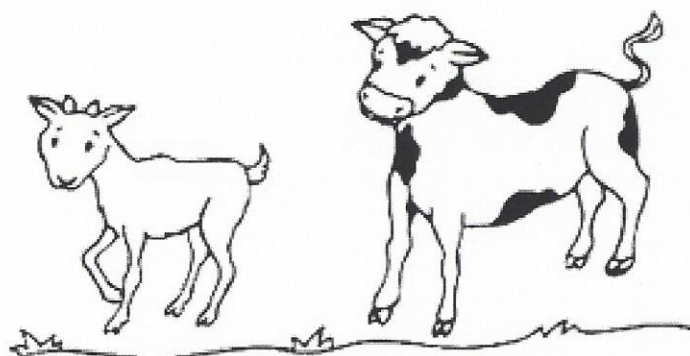
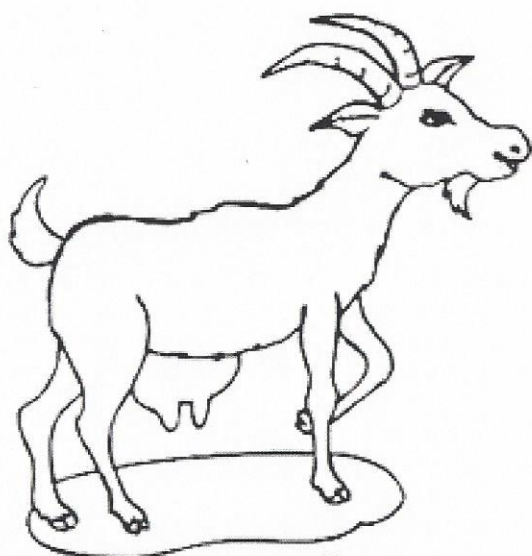






OBRAZEK ROZTRÍHEJ A NADÍ K SOBĚ SPRÁVNÉ POLOVINY.  
MŮŽEŠ SI JE NALEPIT A VYBARVIT.





MAMINCE NAUŽI JEJÍ MLÁĎATKO, POTÉ VYBARVI